

Bassoon

Practical Method for Bassoon

J. Weissenborn

Carl Fischer

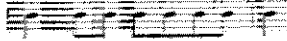
Augmented and Adapted by W. F. Ambrosio (Cat # 02150)

Page	41	Allegretto – lines 7, 8, 9,10
Page	45	Allegro – lines 7,8,9,10
Page	62	Lines 1,2,3,4
Page	67	#11
Page	81	#1

Scales – All scales to be memorized, tongued and slurred.

Chromatic – In a triplet pattern, three octaves starting on low Bb

Diatonic scale use the pattern



(M.M. half note =88)

Major C – 2 octaves, F – 2 octaves, Bb – 2 octaves, G – 2 octaves, D – 2 octaves

Minor a – 2 octaves, d – 2 octaves, g – 2 octaves, e – 2 octaves, b – 2 octaves

(Melodic form ascending and descending)

Sight-reading is required.

NEW HAMPSHIRE ALL STATE AUDITION SCALES

Bb Chromatic, C, F, Bb, G, D Major, a, d, g, e, b melodic minor

BASSOON

$\text{♩} = 88$

C Chromatic

Measures 1-4 of the C Chromatic scale. The notation is in bass clef with a 4/4 time signature. It features a series of eighth notes with trills (trills marked with a '3') and a final triplet of eighth notes.

Measures 5-8 of the C Chromatic scale. The notation continues with eighth notes and trills, ending with a final triplet of eighth notes.

Measures 9-12 of the C Chromatic scale. The notation continues with eighth notes and trills, ending with a final triplet of eighth notes.

Measures 13-16 of the C Chromatic scale. The notation continues with eighth notes and trills, ending with a final triplet of eighth notes.

C Major

Measures 17-20 of the C Major scale. The notation is in bass clef with a 4/4 time signature, showing a standard major scale pattern.

F Major

Measures 21-24 of the F Major scale. The notation is in bass clef with a 4/4 time signature, showing a standard major scale pattern.

Bb Major

Measures 25-28 of the Bb Major scale. The notation is in bass clef with a 4/4 time signature, showing a standard major scale pattern.

G Major

Measures 29-32 of the G Major scale. The notation is in bass clef with a 4/4 time signature, showing a standard major scale pattern.

31
D Major

Musical notation for the D Major scale starting at measure 31. The notation is in bass clef with a key signature of two sharps (F# and C#). The scale consists of eight measures of eighth notes, ascending and then descending, ending with a whole note D.

36
a minor

Musical notation for the a minor scale starting at measure 36. The notation is in bass clef with a key signature of one sharp (F#). The scale consists of eight measures of eighth notes, ascending and then descending, ending with a whole note A.

41
d minor

Musical notation for the d minor scale starting at measure 41. The notation is in bass clef with a key signature of two flats (Bb and Eb). The scale consists of eight measures of eighth notes, ascending and then descending, ending with a whole note D.

46
g minor

Musical notation for the g minor scale starting at measure 46. The notation is in bass clef with a key signature of one flat (F). The scale consists of eight measures of eighth notes, ascending and then descending, ending with a whole note G.

51
e minor

Musical notation for the e minor scale starting at measure 51. The notation is in bass clef with a key signature of three sharps (F#, C#, and G#). The scale consists of eight measures of eighth notes, ascending and then descending, ending with a whole note E.

56
b minor

Musical notation for the b minor scale starting at measure 56. The notation is in bass clef with a key signature of two sharps (F# and C#). The scale consists of eight measures of eighth notes, ascending and then descending, ending with a whole note B.

PRACTICAL METHOD
for the
BASSOON

including
'Fifty Advanced Studies'

Augmented and Adapted by
W. F. Ambrosio

Moderato assai.

mf

L'istesso tempo.

L'istesso tempo.

dolce *dolce*

Moderato assai.

dolce

p *sf*

(Scale of D major through two octaves)

Allegretto

dolce *f*

f *Fine.*

TRIO.

dolce *p*

p *f* *D.C. al Fine.*

(Scale of B minor through two octaves)

Andante.

dolce

fz

Langsam.

Musical notation for the first section, 'Langsam.' It consists of two staves of music in bass clef with a key signature of one sharp (F#) and a 4/4 time signature. The first staff begins with a dynamic marking of *mf*. The music features a series of eighth-note patterns with slurs and accents.

Allegro ma non troppo.

Musical notation for the second section, 'Allegro ma non troppo.' It consists of two staves of music in bass clef with a key signature of one sharp (F#) and a 4/4 time signature. The first staff begins with a dynamic marking of *p* and ends with *f*. The second staff begins with *p* and ends with *f*. The music features a series of eighth-note patterns with slurs and accents.

(Scale of E minor through two octaves)

Musical notation for the scale of E minor through two octaves. It consists of two staves of music in bass clef with a key signature of one sharp (F#) and a 4/4 time signature. The music features a series of eighth-note patterns with slurs and accents.

Allegro.

Musical notation for the third section, 'Allegro.' It consists of four staves of music in bass clef with a key signature of one sharp (F#) and a 4/4 time signature. The first staff begins with a dynamic marking of *p* and ends with *f*. The second staff begins with *f* and ends with *p*. The third staff begins with *f* and ends with *f*. The fourth staff begins with *fz* and ends with *sf*. The music features a series of eighth-note patterns with slurs and accents.

With full tone

Musical notation for the 'With full tone' section. It consists of one staff of music in bass clef with a key signature of one sharp (F#) and a 4/4 time signature. The music features a series of eighth-note patterns with slurs and accents.

(Scale of F major through two octaves)

Musical notation for the scale of F major through two octaves. It consists of two staves of music in bass clef with a key signature of one flat (Bb) and a 4/4 time signature. The music features a series of eighth-note patterns with slurs and accents.

The Long Grace Note (*appoggiatura*)
Andante sostenuto.

dolce, ma con espressione

poco f

f *p* *mf*

dolce

This section features a four-staff musical score in bass clef with a key signature of one flat and a 4/4 time signature. The music is characterized by long grace notes (appoggiaturas) that are slurred to the following notes. The first two staves are marked *dolce, ma con espressione*. The third staff includes dynamic markings *p*, *mf*, and *poco f*. The fourth staff is marked *dolce*. The piece concludes with a final cadence.

The Short Grace Note (*acciaccatura*)
Allegretto.

p *f* *p* *f*

p *f* *p* *f* *p* *f*

cresc. *f*

This section consists of a three-staff musical score in bass clef with a key signature of one flat and a 6/8 time signature. It features short grace notes (acciaccaturas) slurred to the main notes. The first staff has dynamic markings *p* and *f*. The second staff has *p* and *f*. The third staff has *p*, *f*, *p*, *f*, *p*, and *f*, ending with a *cresc.* and *f* marking.

The Grace of Two or More Notes
Played *Patetico*.

ff *mf* *sf*

p *sf* *p* *f*

This section is a three-staff musical score in bass clef with a key signature of one flat and a 3/4 time signature. It demonstrates grace notes consisting of two or more notes slurred together. The first staff has a *ff* marking. The second staff has *mf* and *sf*. The third staff has *p*, *sf*, *p*, and *f*.

Andante maestoso.

mf

3

This section is a two-staff musical score in bass clef with a key signature of one flat and a 3/4 time signature. The music is marked *Andante maestoso* and *mf*. The second staff features a triplet of eighth notes marked with a '3' above the notes.

First musical staff, bass clef, featuring a continuous eighth-note pattern with slurs and accents.

Second musical staff, bass clef, continuing the eighth-note pattern with slurs and accents.

6.

Third musical staff, bass clef, continuing the eighth-note pattern with slurs and accents.

Fourth musical staff, bass clef, continuing the eighth-note pattern with slurs and accents. The word *rit.* is written above the staff.

7.

Fifth musical staff, bass clef, continuing the eighth-note pattern with slurs and accents.

Sixth musical staff, bass clef, continuing the eighth-note pattern with slurs and accents.

8.

Seventh musical staff, bass clef, continuing the eighth-note pattern with slurs and accents.

Eighth musical staff, bass clef, continuing the eighth-note pattern with slurs and accents.

9.

Ninth musical staff, bass clef, continuing the eighth-note pattern with slurs and accents.

Tenth musical staff, bass clef, continuing the eighth-note pattern with slurs and accents.

10.

Eleventh musical staff, bass clef, continuing the eighth-note pattern with slurs and accents.

Twelfth musical staff, bass clef, continuing the eighth-note pattern with slurs and accents.

11.

Thirteenth musical staff, bass clef, continuing the eighth-note pattern with slurs and accents.

Fourteenth musical staff, bass clef, continuing the eighth-note pattern with slurs and accents.

FIFTY ADVANCED STUDIES

(in all keys)

Julius Weissenborn

Allegro moderato.

1.

With full tone.

Allegretto. (Tempo di Minuetto.)

risoluto

2.

f

p